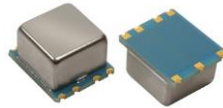


OCO-SMBS

SMD OCXO Sine Wave



QuartzCom
the communications company



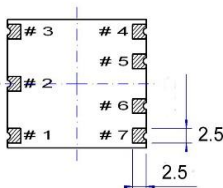
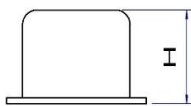
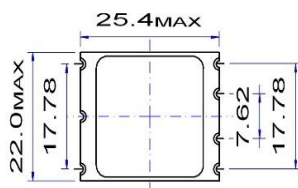
Features

- Frequency: 10.000 MHz to 20.000 MHz
- Supply Voltage : 12.0V

| Parameter | Specification | | | | | | |
|--|--|------------------------------|--------------------------|------------------------------|-----------|-----------------------------|----------|
| | OCO-SMBS12 | | | | | | |
| Frequency Range | 10.000 ~ 20.000 MHz | | | | | | |
| Standard Frequencies | 10MHz 12.8MHz 13MHz 16.384MHz 20MHz | | | | | | |
| <u>O</u> perating <u>T</u> emperature <u>R</u> ange | Code | EH | GH | JK | NK | NN | Z |
| | °C | 0 / +60 | -10 / +60 | -20 / +70 | -40 / +70 | -40 / +85 | Custom |
| Frequency Stability | Code | 50n | | 20n | | 5n0 | |
| vs <u>O</u> perating <u>T</u> emperature <u>R</u> ange *Note 2 | | $\leq \pm 50 \times 10^{-9}$ | | $\leq \pm 20 \times 10^{-9}$ | | $\leq \pm 5 \times 10^{-9}$ | |
| vs. Supply Voltage change [Vdc] $\pm 5\%$ | | $\leq \pm 5 \times 10^{-10}$ | | | | | |
| vs. Load change $\pm 5\%$ | | $\leq \pm 5 \times 10^{-10}$ | | | | | |
| vs. Aging after 30 days of operation *Note 2 | | $\leq \pm 3 \times 10^{-8}$ | | 1 st year | | | |
| Short term Stability for Fo 10MHz *Note 2 | | $\leq 5 \times 10^{-12}$ | | @ 1s | | | |
| Output waveform | Sine wave | | | | | | |
| Output Level | > 400 mV RMS | | | | | | |
| Output Load | 50Ω $\pm 5\%$ | | | | | | |
| Harmonics | < -30 dBc | | | | | | |
| Supply Voltage [Vdc] | +12.0 V $\pm 5\%$ | | | | | | |
| Steady-state current consumption @ +25 °C | < 270 mA | | | | | | |
| Warm-up current consumption @ +25 °C | < 360 mA | | | | | | |
| Warm-up time @ +25 °C | < 180s | | < $\pm 1 \times 10^{-7}$ | | | | |
| Electronic Frequency Control [EFC] range | > $\pm 5 \times 10^{-7}$ | | positive slope | | | | |
| Voltage Control [Vc] | 0 ~ +5.0 V | | | | | | |
| Reference voltage output [Vref] | +5.0 V | | | | | | |
| Phase Noise @ 10MHz [dBc/Hz] | 1 Hz | ≤ -100 | | | | | |
| | 10 Hz | ≤ -130 | | | | | |
| | 100 Hz | ≤ -145 | | | | | |
| | 1 kHz | ≤ -150 | | | | | |
| | 10 kHz | ≤ -155 | | | | | |
| Storage temperature range | -55 ~ +80 °C | | | | | | |
| Environmental test | | | | | | | |
| Vibration | acceleration: 10 g; 10 Hz up to 500 Hz and down to 10 Hz; all 3 axes | | | | | | |
| Shock | 100 g, half-sine, 3 ms | | | | | | |

Note 1: unless otherwise specified conditions are @ 25°C still air

Note 2: all combination not possible (consult factory)



Pin function

- 1 # Vc.
- 2 # Vref.
- 3 # Vdc.
- 4 # RF output
- 5 # Not connected
- 6 # Not connected
- 7 # GND

H = 12.5 mm

Ordering Guide:

OCO-SMBS12-JK20n-10MHz

Vdc OTR

Connection circuit

