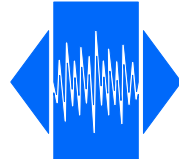


SMX-3F3

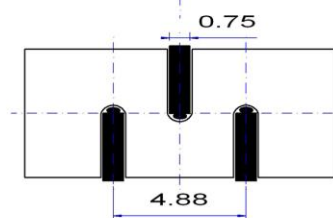
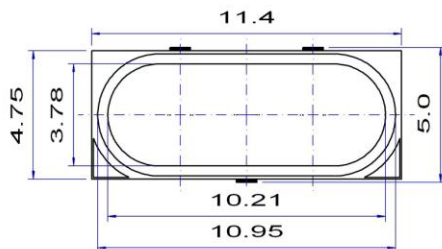
Highly reliable low cost crystal
Designed for automotive



Features

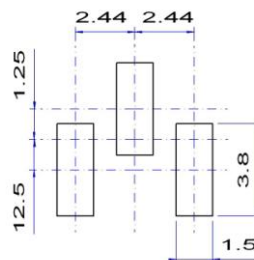
- Applications: telecommunications, audio, automotive, instruments
- Excellent environmental performance
- High reliable, low cost crystal
- Reflow soldering @ 260 °C

| Parameter | Specification |
|------------------------------------|--|
| Frequency range | 3.5 ~ 40 MHz fundamental 32 ~ 70 MHz 3 rd overtone |
| Mode of oscillation | AT-cut BT-cut on request |
| Standard frequencies | 3.579545, 3.6864, 4.096, 4.9152, 5.00, 7.20, 8.00, 10.3680 13.0133, 14.31818, 16.00, 20.00, 24.576 & 25.00 MHz |
| Frequency tolerance | ±10 ~ ± 50 ppm @ +25 °C |
| Frequency stability | ±10 ~ ±100 ppm vs. operating temperature range |
| Aging | ±2 ppm 1 st year |
| Load capacitance | series or parallel resonance (CL = 8 ~ 32 pF) |
| Equivalent series resistance (ESR) | < 75 Ω 3.6864 MHz < 12 Ω 24.576 MHz |
| Drive level | 100 μW |
| Operating temperature range | -20 ~ +70 °C commercial application -40 ~ +85 °C industrial application -40 ~ +125 °C automotive application |
| Storage temperature range | -55 ~ +125 °C |
| Packaging unit | tape & reel 1'000 pieces |
| Customer specifications on request | |



Height H: 2.5 to 4.5 mm Max.

Example for soldering pattern



Do not design any conductive path between the pattern

Example for IR reflow soldering temperature

